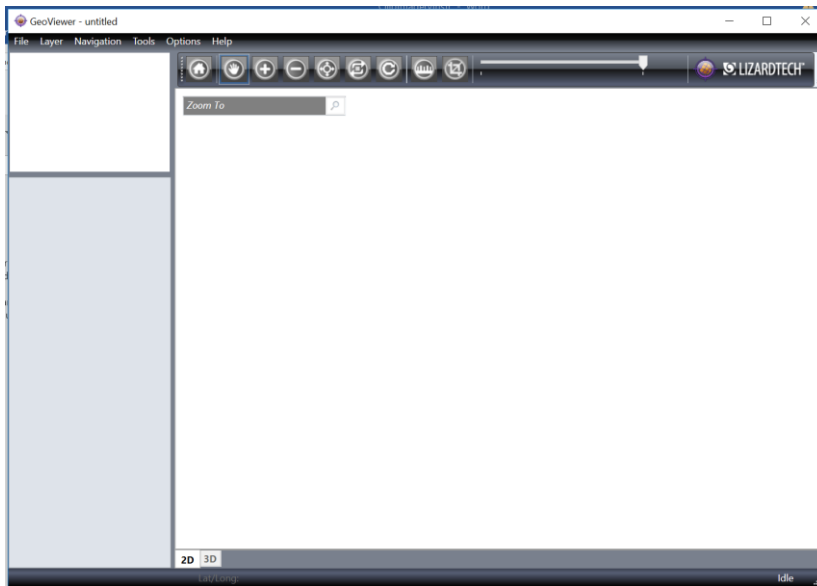
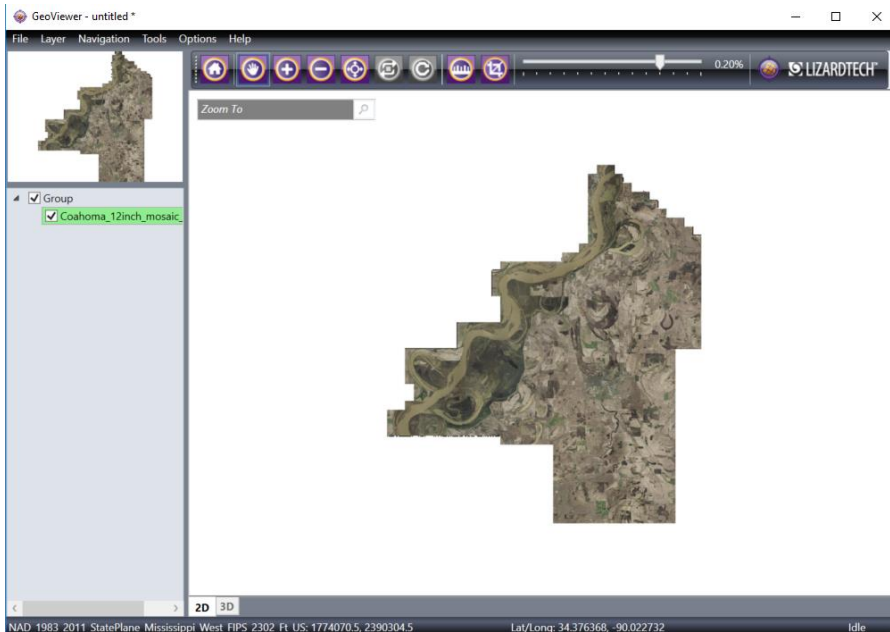


Instructions for Clipping MARIS Imagery

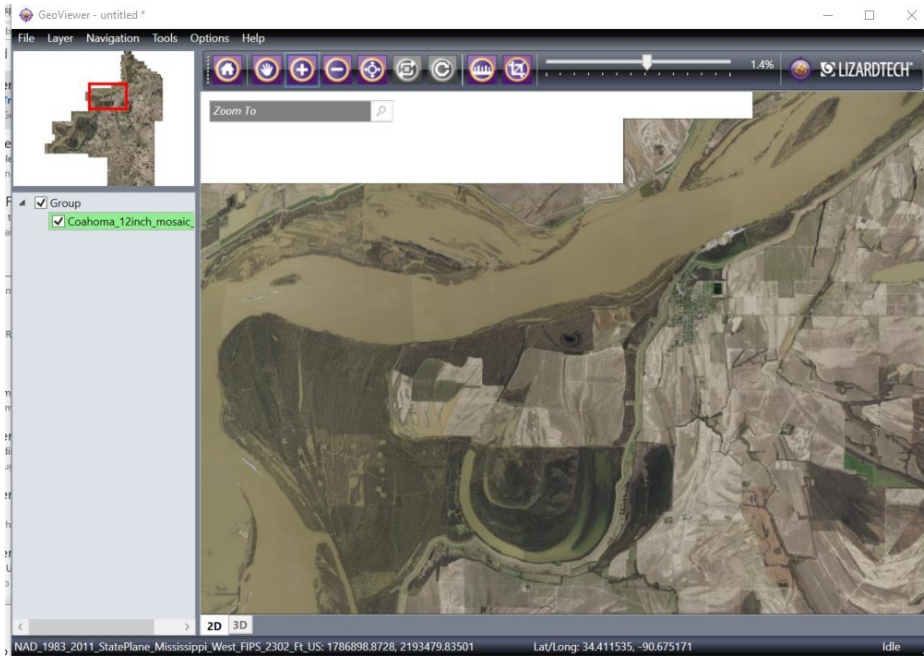
1. Download the latest GeoViewer software from LizardTech
<https://www.extensis.com/support/geoviewer-9>
2. Install
3. Start GeoViewer



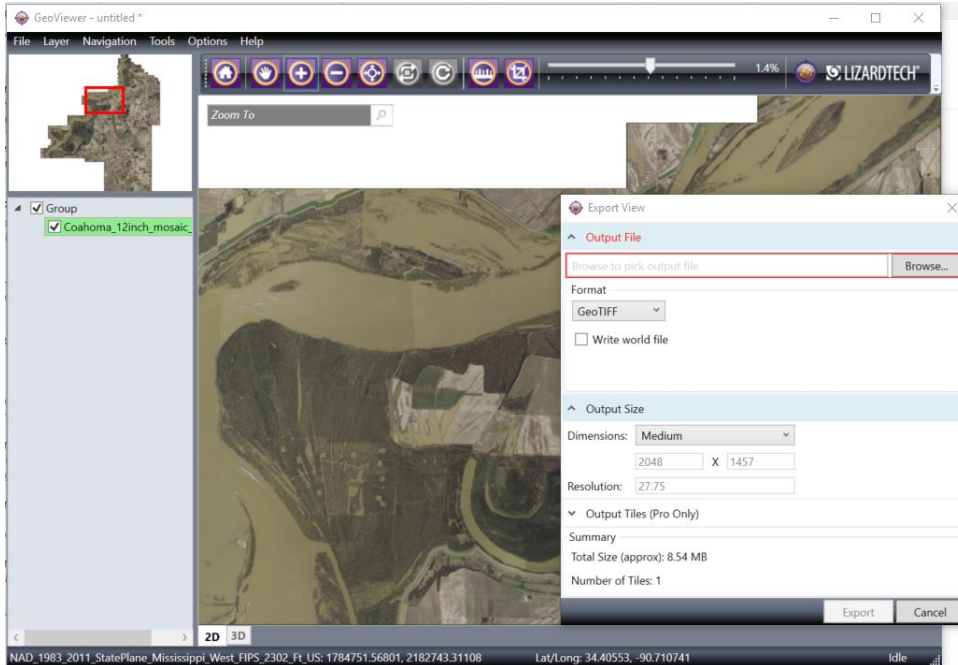
4. Click on File/Add Local Layer to add any .sid or .tif imagery



5. Zoom to area of interest using the  Zoom Tool



6. Export area using Tool/Export/Map Area



7. Specify the directory file name. The output will be a Geotiff.